

ARTIFICIAL LIVING PLANTS

Proposed here is a design for self-reproducing machines that would be harvested for the materials from which they construct themselves. They might prove more feasible than spaceships and more profitable

by Edward F. Moore

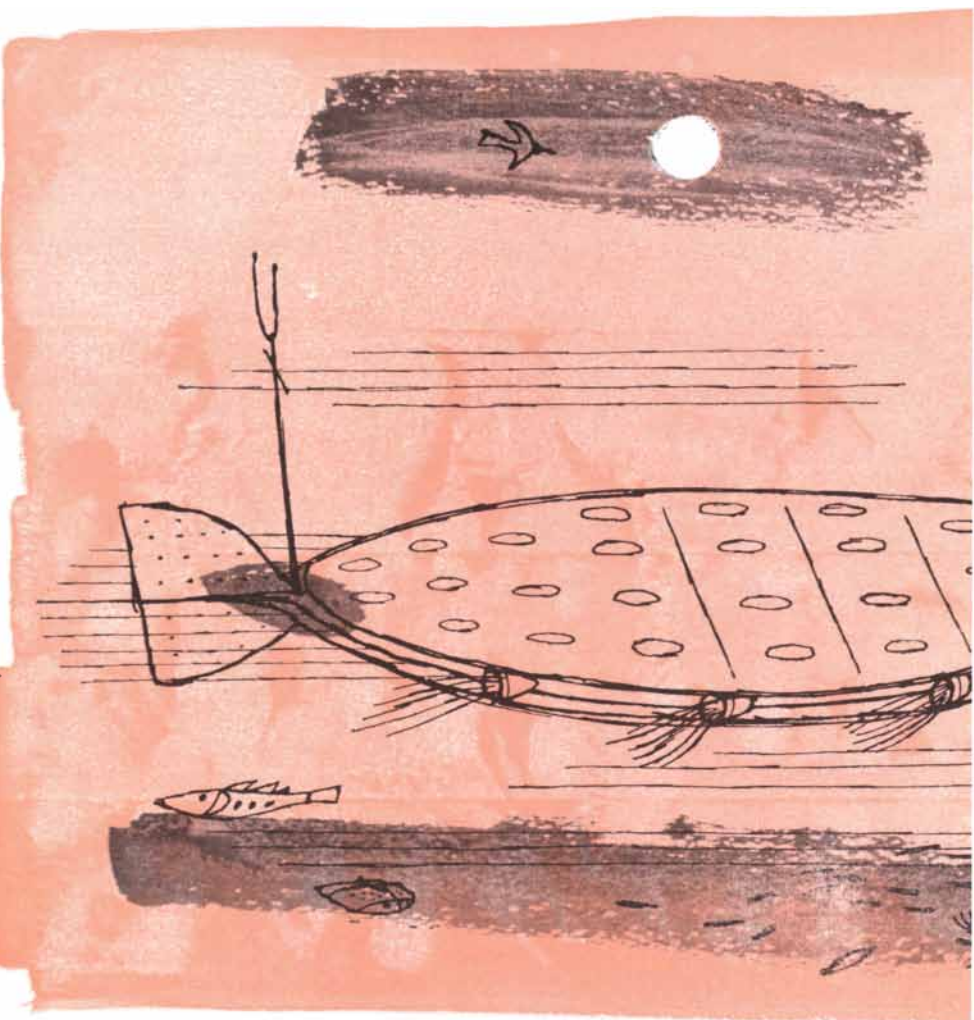
In the growing profession of designers of automatic machines, discussion goes on at two levels. One is the immediate business of building machines for given purposes. The other is the more theoretical, but in some ways more enjoyable, occupation of speculating about machines of the future. These visions sometimes seem fantastic, but they rest on something more solid than fantasy. Engineers join with philosophers in the speculation. Even practical men know that it is from such dreams that the machines of tomorrow will spring.

Several years ago the mathematician John Von Neumann, who has been a pioneer in designing computers, demonstrated as a proposition in logic that it would be possible to build a machine which could reproduce itself [see "Man Viewed as a Machine," by John G. Kemeny; *SCIENTIFIC AMERICAN*, April, 1955]. Von Neumann's machine would be made of wires, relays, batteries, devices for doing mechanical manipulation, and so on. Set up in a stock room well supplied with these parts, the machine would assemble them into a copy of itself. The machine and its offspring could go on building duplicates as long as the supply of parts lasted.

It is unlikely that the machine Von Neumann described will ever actually be built, because it would have no useful purpose except as a demonstration. I would like to propose another type of self-reproducing machine, more complicated and more expensive than Von Neumann's, which could be of considerable economic value. It would make copies of itself not from artificial parts in a stock room but from materials in nature. I call it an artificial living plant. Like a botanical plant, the machine would have the ability to extract its own raw materials from the air, water and soil. It would obtain energy from sun-

light—probably by a solar battery or a steam engine. It would use this energy to refine and purify the materials and to manufacture them into parts. Then, like Von Neumann's self-reproducing machine, it would assemble these parts to make a duplicate of itself.

For the first model of such a machine, a good location would be the seashore, where it could draw on a large variety of available materials. The air would provide nitrogen, oxygen and argon; the sea water would provide hydrogen, chlorine, sodium, magnesium, sulfur, calcium,



This artificial living plant is jet-propelled, on the model of the squid.

potassium, bromine and carbon; the beach would provide silicon and possibly aluminum and iron. Other elements would be available in smaller quantities. From these elements the machine would make wires, solenoids, gears, screws, relays, pipes, tanks and other parts, and then assemble them into a machine like itself, which in turn could make more copies. If the model designed for the seashore proved a success, the next step would be to tackle the harder problems of designing artificial living plants for the ocean surface, for desert regions or for any other locality having much sunlight but not now under cultivation. Even the unused continent of Antarctica might be brought into production.

It is easy to see that a plant of this kind could have considerable economic value. It could be harvested for a material it extracted or synthesized, just as cotton, mahogany and sugar cane are now harvested from plants in nature. Thus an artificial plant which used mag-

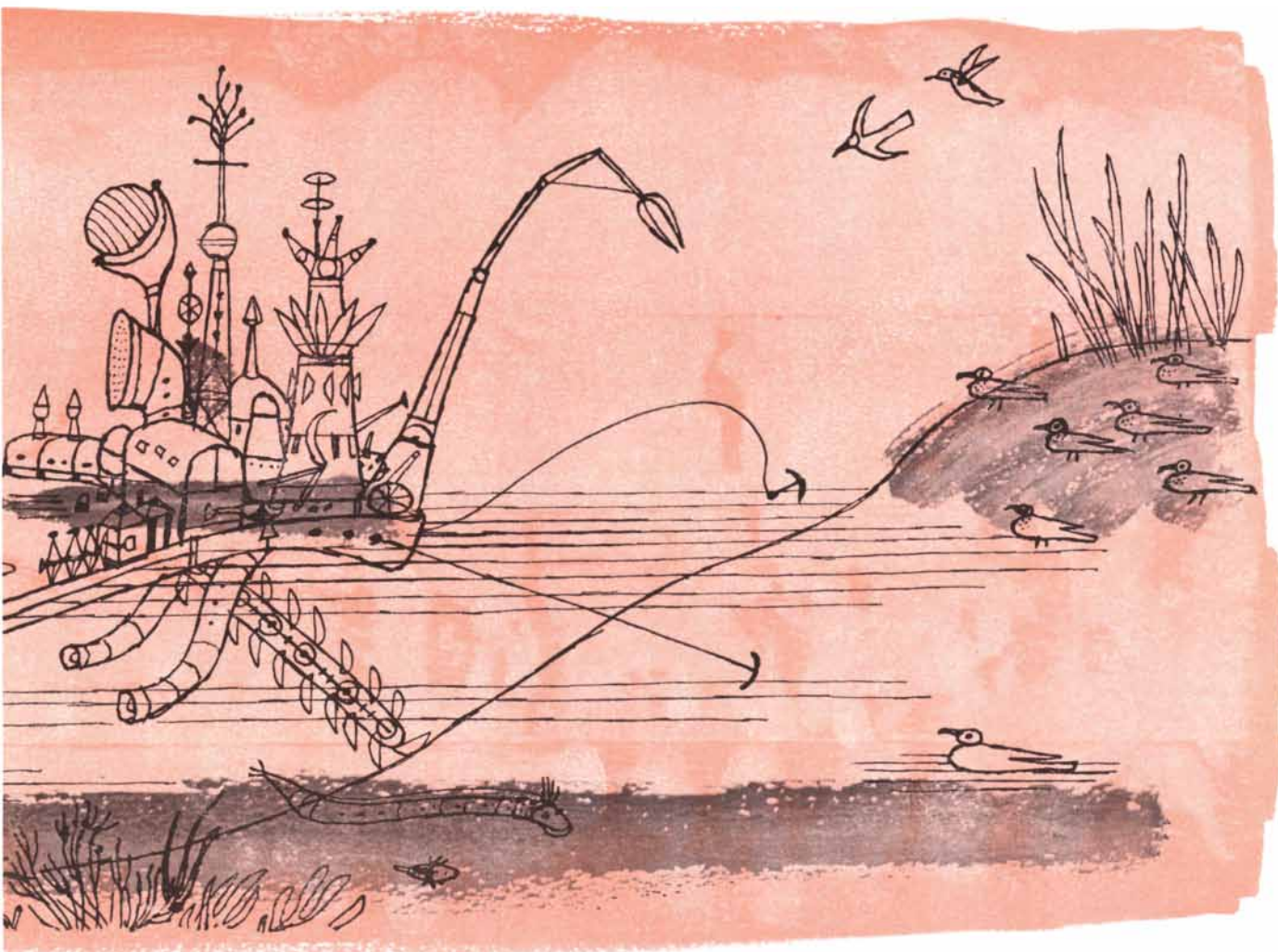
nesium as its chief structural material could be harvested for its magnesium.

The problems to be solved in the design of such a plant would be problems in logic, electrical engineering, mechanical engineering, chemistry and chemical engineering. The main problem in logic has already been solved by Von Neumann, and the additional tasks in logic posed by this machine would be no more difficult than those solved regularly by the designers of digital computers, automatic elevator controls and telephone central offices. In electrical and mechanical engineering the problems would be somewhat more complex than those handled so far in automatic factories, but they could certainly be solved by the expenditure of enough time and money. Most difficult of all would be the problems in chemistry and chemical engineering; their solution might not be possible without advances over present-day technology.

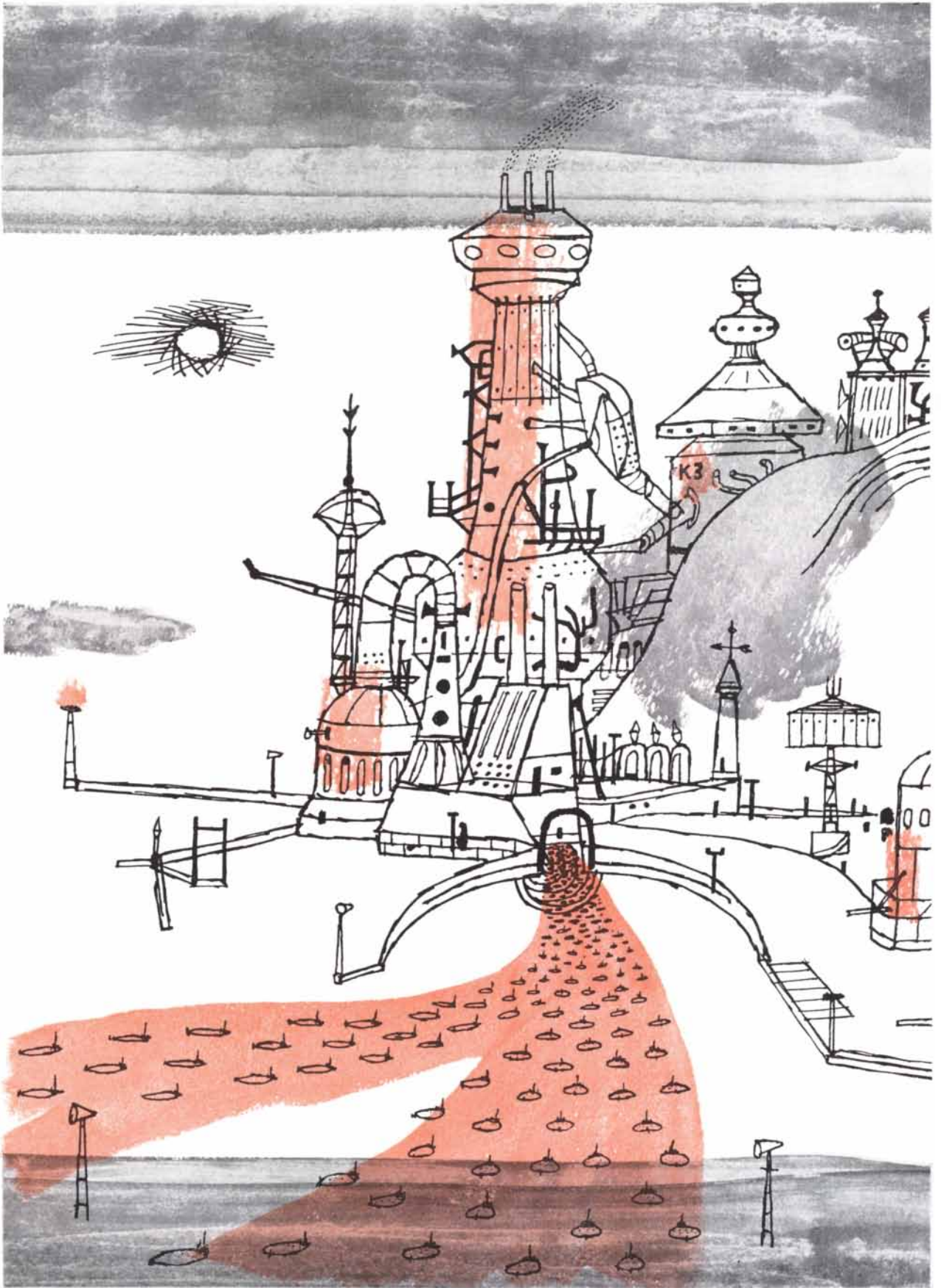
The first chemical problem is to decide what materials would be required for the plant. For the electrical part of the machine they would have to include a conducting material, an insulating material and a ferromagnetic material. For containers in which to carry out the necessary chemical operations and processes, the machine would need refractory materials—to line a smelter if metal melting is one of the operations, or to resist sulfuric acid if the manufacture of sulfuric acid is one of the processes.

Once the list of needed materials was chosen, engineers would have to design a flow scheme for the automatic manufacture of all of them. It would be very desirable to keep the list of materials as short as possible, and the manufacturing operations and processes as simple as possible. Since not all the materials would have to be made at once, much of the apparatus could be used for different purposes at different stages.

The operations chosen would not



When securely moored, it will begin the process of reproduction.



Like lemmings, a school of artificial living plants swims into the maw of the harvesting factory.

necessarily be the most economical ones available, for it might be advisable to use somewhat inefficient methods to cut down the complexity of the machine and maximize its over-all effectiveness. In designing such a machine it would simplify matters to adopt some criterion as a general guide for choosing between possible processes or materials. The most reasonable general criterion is the time factor—how long it would take, say, for a population of artificial living plants to double itself. If this time could be made as short as six months or a year, the artificial living plants would be very successful, but if it were as long as the time it takes for money to double at compound interest, the machine would be a poor investment.

The calculation of net reproduction time of course would have to take account of mortality among the artificial living plants: a certain fraction of each generation would "die" because of internal failures, degeneration or natural catastrophes such as earthquakes or hurricanes.

To use energy effectively and reproduce itself in a reasonable time the machine should be small, or at least very thin. The energy required to manufacture materials would be proportional to their mass (*i.e.*, roughly the cube of the linear dimension), but the machine would receive energy from sunlight only in proportion to area, or the square of linear dimension. A population of algae, spread on the surface of a pond or tank, takes less than a week to double itself, but a sequoia tree may take centuries.

Why make an artificial plant out of ferromagnetic materials, electric motors, machine tools, gears, screws, wires, valves and lubricating oil? Why not make it of organic materials, such as amino acids and chlorophyll? The answer, of course, is that we do not yet understand organic chemistry well enough. Biochemists have not even identified all of the chemical substances in the simple blue-green alga. They are still far from being able to synthesize substances such as chlorophyll. On the other hand, the chemistry of electrical insulators, ferromagnetic materials, lubricating oils and so on are so well known that they can easily be synthesized from materials in nature. Moreover, engineers are on familiar ground in operating machinery by electrical and mechanical methods, but we would not know how to begin to design a system operated by hormones and enzymes.

Similarly we would have to be con-

ENGINEERS

ARMA announces

INERTIAL NAVIGATION



development program for an advanced Air Force missile

Inertial Navigation offers the most advanced concept in guidance, requiring no terrestrial source of energy or information, no earth-bound direction once the ultimate destination is selected. It offers the most promising solution of the guidance problem for the long-range missile.

While the principles are simple, the realization involves advanced creative engineering. ARMA's many successes in the creation of precision instruments and systems for navigation and fire control, especially precision gyroscopic reference systems for all applications, fit it uniquely for a major role in this advanced area.

The height of imaginative resourcefulness and engineering skill are required to create the degree of precision—hitherto unattained—in the components essential to the guidance of advanced missile systems—the gyros, accelerometers, and computer elements. Miniaturization must be coupled with extraordinary ability to provide utmost accuracy under conditions of extreme velocities, temperatures, and accelerations.

There's significant scientific progress to be achieved at this leadership company and individual renown to be won, by engineers associated with ARMA's Inertial Navigation Program. Many supplementary benefits make a career here doubly attractive.

Moving allowances arranged.

Forward confidential resume. No reference contact without your permission.

Manager of Technical Personnel, Dept. 674

ARMA

Division of American Bosch Arma Corporation
Roosevelt Field, Garden City, Long Island, N. Y.

Immediate openings for Supervisory and Staff positions as well as for Senior Engineers, Engineers, and Associate Engineers, experienced in:

Systems Evaluation
Gyroscopics
Digital Computers
Accelerometers
Telemetry
Guidance Systems
Reliability
Stabilizing Devices
Servomechanisms
Automatic Controls
Thermodynamics
Environmental Research
Transformers
Production Test Equipment
Standards
Data Reduction & Analysis
Ground Support Equipment

Make your own tiny genius computers

TYNIACS (\$9.95) & GENIACS (\$16.95)

the improved kits made by Berkeley

K 3: TYNIAC® ELECTRIC BRAIN CONSTRUCTION KIT: Complete set of over 300 parts, including versatile multiple switches and new improved wipers (patent applied for) that make all contacts effective; manual of instructions; templates; introduction to the Boolean algebra of switching. Makes 13 entirely NEW arithmetical, logical, computing, puzzle-solving (BLACK MATCH, SUNDORRA 21) and game-playing machines and also 20 Geniacs including NIM, TIT-TAT-TOE Machines. Each Tyniac runs on one flashlight battery, requires no soldering (all connections with nuts and bolts), is completely safe. Demonstrates in instructive and power of computing and reasoning circuits.....\$9.95 (for shipment, add 80¢ west of Mississippi; \$1.40 outside U.S.). Returnable.

K 1: GENIAC® ELECTRIC BRAIN CONSTRUCTION KIT: More advanced set, with more materials, for making 33 Geniacs and 13 Tyniacs.....\$16.95 (for shipment, add 80¢ west of Mississippi; \$1.80 outside U.S.).

P 38: Tyniac Manual.....\$2.00 P 30: Geniac Manual.....\$3.00
K 4: Set of Wipers for Geniac Kit.....\$1.00, Returnable.

LETTERS FOR FUN (\$3.88)

K 7: LETTERS FOR FUN: Supply (over 100 sheets) of hollow outline letters, numerals, sounds, signs, etc., for Johnny and other children to color, paint, cut out, play with, and enjoy—and incidentally learn; includes 24 crayons; manual "Helping Teach Your Children to Read for Fun—Guide for Parents"; etc. Materials, ideas, assistance, and references for intelligent parents to help teach their children the alphabet, phonics, spelling, and reading for fun. Ages 3 up. Returnable if not satisfactory.....\$3.88

GREENARIUM

GREENARIUM®: 4 cubic-foot automatic greenhouse for an indoor window, for growing orchids, etc., with redwood frame, sheet plastic covering, transparent front, automatic watering system, full instructions, and "Guide to Growing Plants in an Indoor Greenhouse", by E. C. Berkeley.

K 5: Kit.....\$12.95
K 6: Assembled Greenarium.....\$18.95

Shipped Express Collect. Returnable.

We are Berkeley Enterprises, Inc. (affiliate of Edmund C. Berkeley and Associates), producers of scientific kits, makers and exhibitors of small robots (Simon, Squee, etc.), publishers (the monthly Computers and Automation, P. 2, \$5.50, annual subscription), etc.

—MAIL THIS COUPON—

Berkeley Enterprises, Inc.,
815 Washington St., R 174, Newtonville 60, Mass.

1. Please send me items circled:
K 3 K 1 P 38 P 30 K 4 K 7 K 5 K 6 P 2
Returnable in 7 days for full refund if not satisfactory.
I enclose \$.....in full payment.

2. Please send me free announcements of kits, publications, etc.
My name and address are attached.

LINGUAPHONE
MAKES IT EASY TO
LISTEN and LEARN to
Speak

SPANISH GERMAN ITALIAN
RUSSIAN JAPANESE
MODERN GREEK—any of 34 languages available

For FREE TRIAL AT HOME

With LINGUAPHONE—The World's Standard Conversational Method—You Start to SPEAK another language TOMORROW—or IT COSTS YOU NOTHING!

By listening to Linguaphone's fine, life-like, conversational recordings for just 20 minutes a day, you can learn another language AT HOME—the same, easy, natural way you learned to speak English long before you went to school.

Only LINGUAPHONE brings 8 to 12 of the world's best native language teachers into your home. You hear both men and women converse about up-to-date, everyday matters in their native tongue. YOU listen—YOU understand—YOU SPEAK correctly as they do. It's like living in another land.

That's why Linguaphone is used 'round the world by scientists, educators, governments and business firms. Over a million home-study students of all ages have learned to speak another language this ideal way.

Send today for Free booklet that fully describes the Conversational Method; also details on how you may obtain a COMPLETE Course-unit in the language you choose on FREE TRIAL. Linguaphone Institute, T-3106 Rock. Plaza, N. Y. 20.

LINGUAPHONE INSTITUTE CI 7-0830
T-3106 Rock. Plaza, New York 20, N. Y.

Please send me: FREE Book.
 Details on FREE Trial. No obligation, of course.
My language interest is.....
Name.....
Address.....
City.....Zone.....State.....
World's Standard Conversational Method For Over Half a Century



**Call Cannon-Muskegon
for complete
Vacuum Melting
service... and
UltraMet alloys**

Our modern vacuum melting production and laboratory facilities and metallurgists provide you with the best in service and alloys. We can *compound, test and produce* vacuum melted UltraMet alloys for any application... in test or production quantity. Cannon-Muskegon provides you with complete physical, metallurgical and chemical evaluation of the alloy you need.

Accurately controlled melting of UltraMet ferrous-, nickel- and cobalt-base alloys results in super-clean metals with greater tensile strength, ductility, wear life... higher electrical and magnetic properties... improved corrosion and abrasion resistance. Why not let Cannon-Muskegon alloy specialists solve your metallurgical problem?

We offer industry

Materials for Remelt

... under conventional air melting, inert gas, or vacuum processes.

Casting Development

... includes research and experimental facilities for investment, shell mold, dry sand, and permanent mold castings.

Ingot or Cast Billets

... for rolling, forging or extruding in individual weights up to 250 lbs.

For full particulars write for our New Bulletin on Vacuum Melting and Air Melting facilities and products.



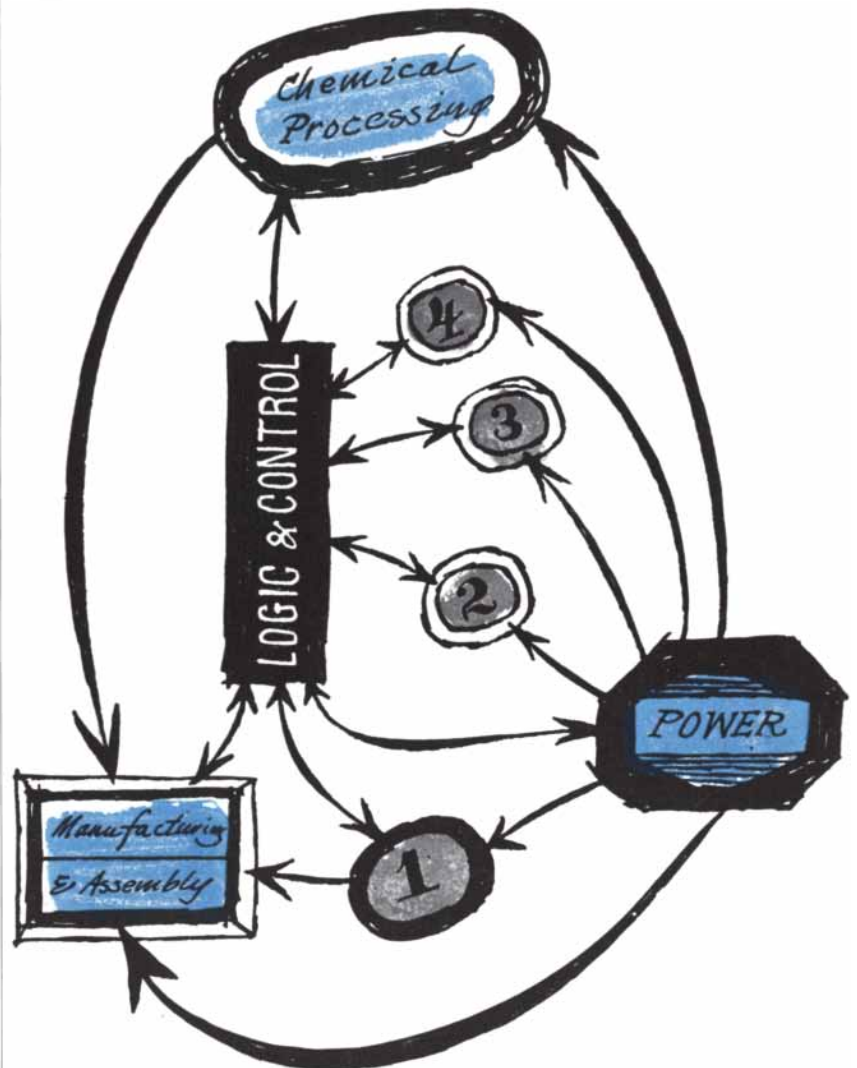
CANNON - MUSKEGON CORPORATION

2891 Lincoln Street Muskegon, Michigan, U.S.A.

METALLURGICAL SPECIALISTS

tent with a plant that reproduced itself from the same blueprints, or "genes," in every generation. We have a somewhat better understanding of theoretical genetics and evolution than we do of biochemistry, but it is still not complete enough to enable us to endow a machine with evolutionary abilities. In any case, the ability to mutate would be a doubtful benefit: it seems safer, at least at the beginning, to let the plant reproduce itself exactly in successive generations, lest it take on undesirable characteristics.

If the object is to manufacture a specific product, would it not be much simpler to design an automatic factory to make it, rather than to go to all the trouble of creating an artificial living plant? It would indeed be simpler, but obviously the returns would not be as great. Where a factory turns out products at a constant rate, the production of the artificial living plant would grow exponentially. If its net reproduction time were one year, after 30 years there would be more than a billion of these



1. Primary standard of Length.
2. Sensory devices. 3 Blue Prints
4. Locomotion

Feedback circuits (double-pointed arrows) ensure coordination of principal organs.

Sprints from deck to stratosphere

His beat is the oceans of the world. His job, to challenge unknown intruders on our defense perimeters. A Navy pilot is a seagoing sentry on 24-hour duty.

A major role in this job of positive interception—and as far from our shores as possible—is being assigned to the Douglas F4D Skyray. Less than a minute after leaving the deck, Skyray can soar past the 10,000-ft. mark. Seconds later it's hissing through the stratosphere . . . 35,000 feet up . . . at the ready with rockets and cannons.

This rate of climb comes as no surprise. Skyray also holds the world's official F.A.I. sea level speed records for the 3- and 100-kilometre courses.



Douglas F4D Skyray—fastest carrier-based interceptor. Performance of agile Skyray continues the Douglas tradition of “faster and farther with a bigger payload.” Yet performance figures are meaningless without a skilled pilot at the controls. If you are interested in a career as a Naval Aviator, write Nav. Cad. Washington 25, D. C.

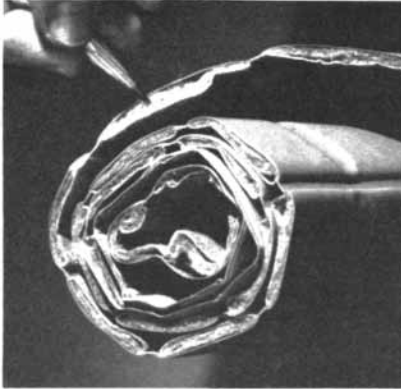
Depend on **DOUGLAS**



First in Aviation

NOW!

**Low-Cost Backing Material
Cuts Upholstery and
Backing Costs**



**FELTERS
ALLFAB**

AllFab is a revolutionary fabric of cardable fibers like wool, rayon, cotton, dynel, nylon and dacron combined with a resin binder. This thermoplastic binder has two big advantages: (1) AllFab will hold and give dimension to any embossed pattern, and (2) it is possible to electronic "stitch" or heat seal, eliminating sewing.

Result: A felt-like fabric with a tremendous range of fiber combinations, using selections of diameters, lengths and gravities to meet your own specifications.

Find out about this brand new all purpose, non-woven fabric NOW. Put its special properties to use as a low-cost filler and backing material. Call sales office nearest you, or send coupon below to: The Felters Co., 242 South St., Boston 11, Mass.

Properties

Can use almost any cardable fiber or combination
Vary resin content from 15-45%
Thickness from 1/16" to 1", specialties to 2"
Weight from 4 oz. to 16 oz. and up
Width from 16" to 80" but 72" preferred
Color within mix limits, natural shades

Another Fabric First in . . .

FELT by FELTERS

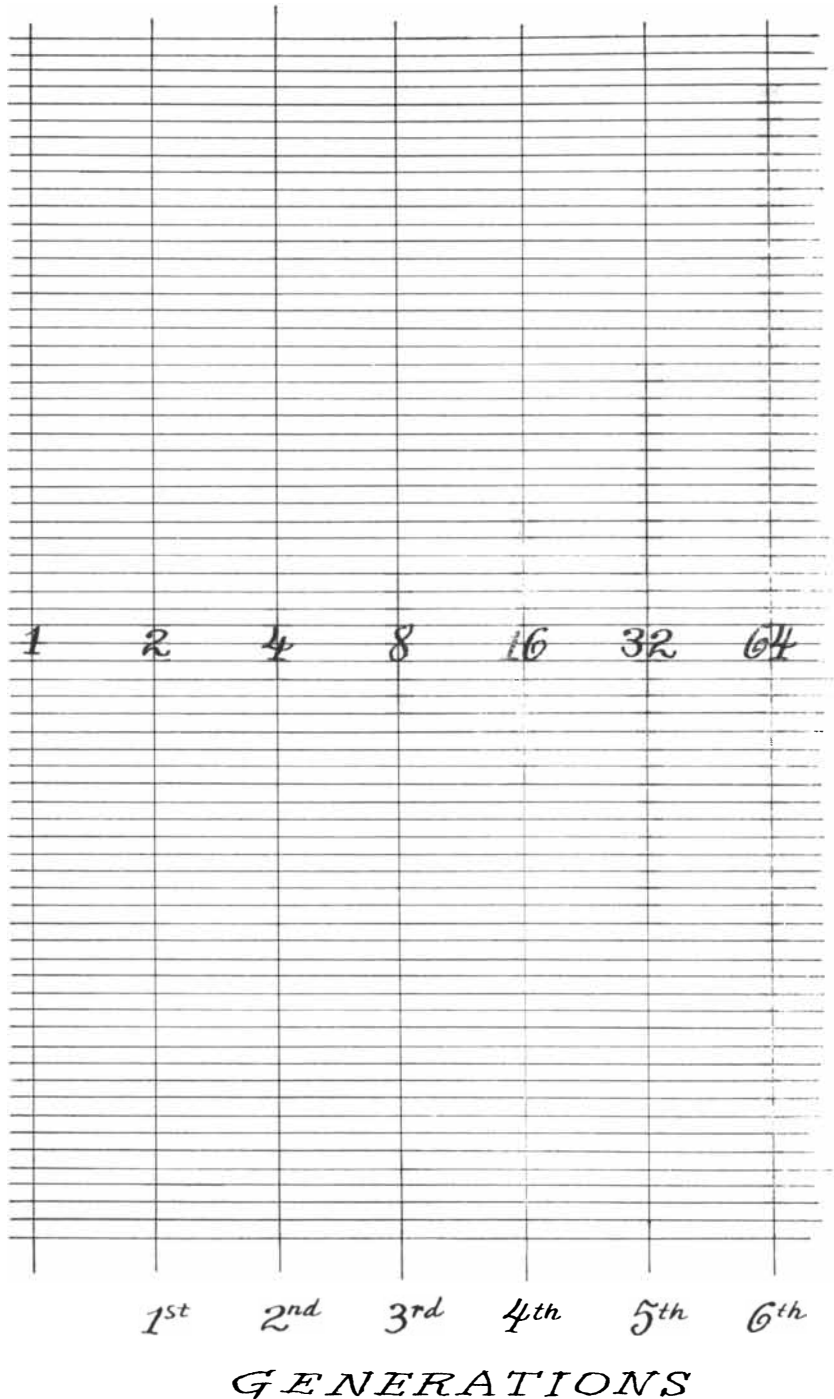
**Send for FREE Sample
and descriptive bulletin**

Name.....
(Please Print)

Company.....

Street.....

City.....Zone.....State.....

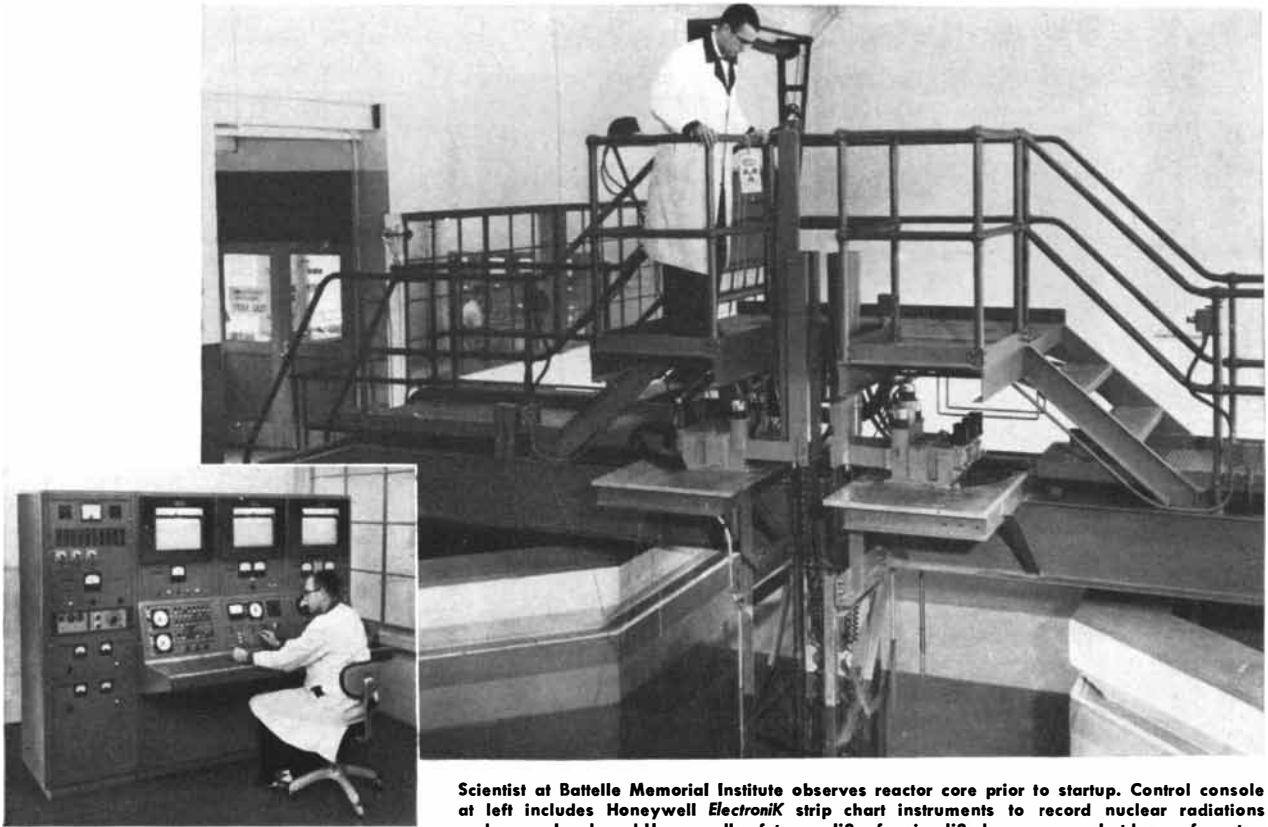


In six generations one plant would have 63 descendants and 1,048,575 in 20.

plants! Needless to say, they could not be allowed to reproduce indefinitely, for they would soon fill up the oceans and the continents. And the artificial plant would have to be provided with a means of locomotion to move out of the way as it was produced; if not, the multiplying population would cut off sunlight and choke itself to death. As the counter-part of the seed-dispersing mechanisms

whereby plants are distributed in nature, the artificial plant would need wheels or a propeller. It might be worth while to build into these plants a tendency to migrate, like lemmings, to preassigned locations where they could be harvested conveniently.

Clearly there would be need for international controls and allocation of areas for production and harvesting. This



Scientist at Battelle Memorial Institute observes reactor core prior to startup. Control console at left includes Honeywell *ElectroniK* strip chart instruments to record nuclear radiations and power level; and Honeywell safety amplifier for simplified emergency shutdown of reactor.

Honeywell packaged control console operates new swimming pool reactor

A new nuclear reactor, key part of the nation's first complete, privately-operated atomic research center, features a Honeywell control system. This new swimming pool type reactor at the Battelle Memorial Institute's Atomic Energy Research Center, Columbus, Ohio, was built by American Machine and Foundry Company. Honeywell engineered the electronic control portion of the console to AMF specifications, and delivered the console to the site completely assembled, ready for immediate installation.

The system features the new Honeywell-developed safety amplifier which provides simplified emergency shutdown of the reactor. Extra fuses and fast-acting relays overcome the dangers of locked magnets, snagged contacts and short circuits. Included in the system are a low-level period amplifier, which

differentiates the log count rate meter output to give a period signal for safety during start-up, and a log N and period amplifier with two functions combined in a single unit for extra convenience and economy.

Honeywell's specialized staff of nuclear control engineers have been active in the atomic research program since its inception. Whether you're working with nuclear reactors for research, power or production, you'll find it advantageous to call on Honeywell for full control engineering service . . . including assistance with installation, testing and follow-up. Call your nearby Honeywell field engineer. He's as near as your phone.

MINNEAPOLIS-HONEYWELL REGULATOR Co.,
Industrial Division, Wayne and Windrim
Avenues, Philadelphia 44, Pa.—in Canada,
Toronto 17, Ontario.



MINNEAPOLIS
Honeywell
BROWN INSTRUMENTS

First in Controls

Scientists . . . Engineers



*A suggestion from
Dr. Robert J. Creagan, Project Manager*

Westinghouse Commercial Atomic Power

"The physicist's role in the development of nuclear reactors is in analytical and experimental reactor physics, studying the problems of steady state reactivity and of reactor kinetics.

"In addition, reactor control problems with respect to transients are important. The reactor control must be integrated with the transient response of the entire power plant. Mathematical analysis using analog and digital computers is an important part of the work. We'd welcome an opportunity to discuss these interesting phases of our work with you."

An Experienced, Young, Fast-Growing Team

CAPA—Commercial Atomic Power Activity—is the most dynamic new division at Westinghouse. We're "fluid," not fixed. Supervisory jobs open up fast!

Our growth curve is bound to be *steep*—as electric power demand and atomic power production pyramid sharply. We're entirely *commercial*—not dependent on government contracts. Opportunities for advanced study at company expense. Get in on the "industry of tomorrow" *today*—at Westinghouse CAPA.

Immediate Openings for professionally established men and those just starting their careers: Physicists • Physical Chemists • Chemical Engineers • Mechanical Engineers • Electrical Engineers • Designers • Metallurgists.

*Send your
résumé*

Please mail résumé of your professional and business background to: C. S. Southard, Westinghouse Commercial Atomic Power, Box 355, Dept. 103, Pittsburgh 30, Pennsylvania.

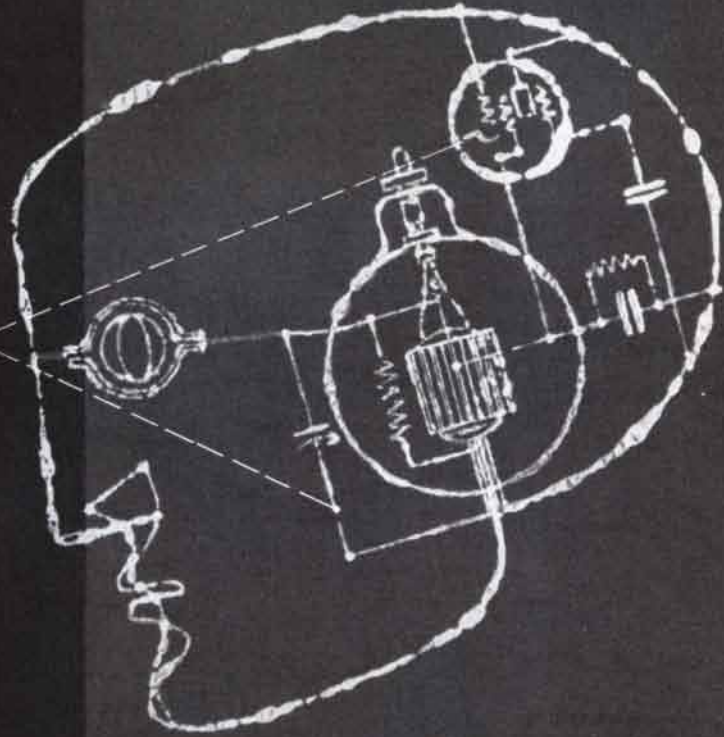
WESTINGHOUSE
FIRST IN ATOMIC POWER

would involve not only the political rights of nations but also questions of natural conservation. Ecologists would be concerned about the artificial plant's competition with natural plants for sunlight and the possibility that it might upset the balance of nature in the areas where it was allowed to multiply.

Social problems would also arise in connection with the selection of products to be manufactured. An artificial plant might be designed to make a product which was not useful to the plant itself. For instance, it might extract gold from sea water, refine it and cast it into an ingot, which would be harvested as the crop from the plant. But it would certainly be shortsighted to select this crop for manufacture. Multiplying at an exponential rate, the gold-making plant would soon produce so much of it that gold would lose its scarcity value and probably end up being worth very little, for gold does not directly fulfill any essential human need. On the other hand, an example of an excellent candidate for production by an artificial plant is fresh water, which is needed in great quantities in various parts of the world.

In short, the artificial living plant has tremendous possibilities, if we can solve the problems in designing it. Such machines would free mankind's agriculture from dependence on the natural characteristics of plants. They would make it possible to produce any desired crop, instead of only those that nature happens to have provided. They would be a long step forward in man's control of his environment.

How much would such a project cost, and how soon could it be successful? That depends on the difficulties encountered in chemistry and chemical engineering. My guess is that if, on the basis of present-day chemical knowledge, a scheme could be found for a machine to reproduce itself from a short list of materials made by simple and efficient processes, the whole design problem could probably be solved in five or 10 years, for as little as \$50 million to \$75 million. But if new chemical processes must first be found, and if the machine would require a long list of materials producible only at low yield in complicated fashion, it might cost hundreds of millions of dollars and take decades to develop such a machine. I think the achievement would be more easily attainable than human flight to other planets in a spaceship, but it is obviously not going to be accomplished by a lone inventor working in his basement.



**HOW
TO IMPROVE
A MISSILE'S
IQ**

Today's guided missile is an amazingly sophisticated and intelligent instrument, capable of complex thought and precise action. Tomorrow's must have an even higher IQ.

To improve a missile's intelligence, Fairchild Guided Missiles Division engineers and scientists have developed radical new concepts for guidance and control, transferring their intelligence into the missile's guidance center.

Through sound research, inventiveness and imagination, FGMD engineers and scientists continue to make great strides in all fields of missile development...putting more brain-power into more missile power.



FAIRCHILD

GUIDED MISSILES DIVISION • WYANDANCH, LONG ISLAND, N. Y.
A Division of Fairchild Engine and Airplane Corporation

...WHERE THE FUTURE IS MEASURED IN LIGHT-YEARS!